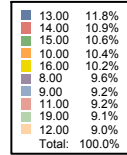
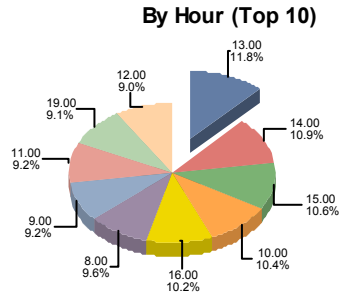
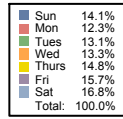
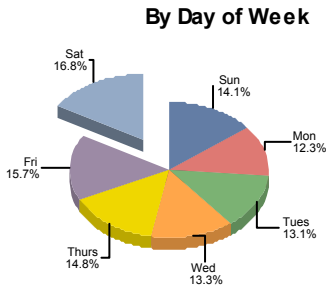
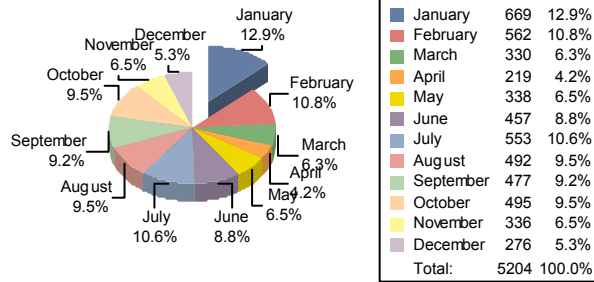


Call Volume Analysis Report
Rev.03/04/12



Calls by Month



Call Volume Analysis Report

From: 01/01/2020 0:55 To: 12/31/2020 23:22

ORI: VT0080200 Stowe Police Department

January	Total calls in January	669	% of Total	Hour	Calls/Hour	% of Calls
	Calls on Sundays	51	0.98%			
				1:00	3	5.88%
				2:00	3	5.88%
				3:00	2	3.92%
				5:00	1	1.96%
				7:00	1	1.96%
				8:00	5	9.80%
				9:00	6	11.76%
				10:00	7	13.73%
				11:00	3	5.88%
				12:00	1	1.96%
				13:00	1	1.96%
				14:00	3	5.88%
				15:00	5	9.80%
				16:00	2	3.92%
				17:00	3	5.88%
				18:00	1	1.96%

Call Volume Analysis Report

From: 01/01/2020 0:55

To: 12/31/2020 23:22

January	Total calls in January 669	<i>% of Total</i>	<i>Hour</i>	<i>Calls/Hour</i>	<i>% of Calls</i>
			19:00	1	1.96%
			20:00	1	1.96%
			22:00	2	3.92%
Calls on Mondays 65					1.25%
			0:00	4	6.15%
			2:00	1	1.54%
			7:00	7	10.77%
			8:00	4	6.15%
			9:00	5	7.69%
			10:00	2	3.08%
			11:00	5	7.69%
			12:00	4	6.15%
			13:00	6	9.23%
			14:00	7	10.77%
			15:00	1	1.54%
			16:00	3	4.62%
			17:00	1	1.54%
			19:00	3	4.62%
			20:00	5	7.69%
			21:00	4	6.15%
			22:00	1	1.54%
			23:00	2	3.08%
Calls on Tuesdays 81					1.56%
			0:00	2	2.47%
			1:00	2	2.47%
			2:00	2	2.47%
			5:00	3	3.70%
			6:00	1	1.23%
			7:00	4	4.94%
			8:00	6	7.41%
			9:00	5	6.17%
			10:00	6	7.41%
			11:00	3	3.70%
			12:00	6	7.41%
			13:00	6	7.41%
			14:00	8	9.88%
			15:00	8	9.88%
			16:00	6	7.41%
			17:00	3	3.70%
			18:00	4	4.94%

Call Volume Analysis Report

From: 01/01/2020 0:55

To: 12/31/2020 23:22

January	Total calls in January 669	<i>% of Total</i>	<i>Hour</i>	<i>Calls/Hour</i>	<i>% of Calls</i>
			19:00	2	2.47%
			20:00	2	2.47%
			23:00	2	2.47%
Calls on Wednesdays 92					1.77%
			0:00	3	3.26%
			1:00	4	4.35%
			2:00	5	5.43%
			5:00	1	1.09%
			7:00	9	9.78%
			8:00	6	6.52%
			9:00	4	4.35%
			10:00	3	3.26%
			11:00	6	6.52%
			12:00	1	1.09%
			13:00	11	11.96%
			14:00	12	13.04%
			15:00	10	10.87%
			16:00	6	6.52%
			17:00	4	4.35%
			19:00	1	1.09%
			20:00	2	2.17%
			21:00	3	3.26%
			22:00	1	1.09%
Calls on Thursdays 155					2.98%
			0:00	2	1.29%
			1:00	3	1.94%
			2:00	2	1.29%
			6:00	1	0.65%
			7:00	14	9.03%
			8:00	9	5.81%
			9:00	17	10.97%
			10:00	13	8.39%
			11:00	5	3.23%
			12:00	8	5.16%
			13:00	21	13.55%
			14:00	19	12.26%
			15:00	13	8.39%
			16:00	9	5.81%
			17:00	4	2.58%
			18:00	3	1.94%

Call Volume Analysis Report

From: 01/01/2020 0:55

To: 12/31/2020 23:22

January	Total calls in January 669	% of Total	Hour	Calls/Hour	% of Calls
			20:00	3	1.94%
			21:00	3	1.94%
			22:00	4	2.58%
			23:00	2	1.29%
Calls on Fridays 132					2.54%
			0:00	4	3.03%
			2:00	2	1.52%
			5:00	1	0.76%
			6:00	2	1.52%
			7:00	8	6.06%
			8:00	6	4.55%
			9:00	4	3.03%
			10:00	5	3.79%
			11:00	6	4.55%
			12:00	5	3.79%
			13:00	9	6.82%
			14:00	22	16.67%
			15:00	10	7.58%
			16:00	6	4.55%
			17:00	2	1.52%
			18:00	2	1.52%
			19:00	13	9.85%
			20:00	8	6.06%
			21:00	2	1.52%
			22:00	9	6.82%
			23:00	6	4.55%
Calls on Saturdays 93					1.79%
			0:00	4	4.30%
			1:00	2	2.15%
			2:00	3	3.23%
			3:00	1	1.08%
			4:00	1	1.08%
			6:00	3	3.23%
			7:00	3	3.23%
			8:00	6	6.45%
			9:00	6	6.45%
			10:00	9	9.68%
			11:00	3	3.23%
			12:00	7	7.53%
			13:00	10	10.75%

Call Volume Analysis Report

From: 01/01/2020 0:55

To: 12/31/2020 23:22

January	Total calls in January 669	<i>% of Total</i>	<i>Hour</i>	<i>Calls/Hour</i>	<i>% of Calls</i>
			14:00	8	8.60%
			15:00	6	6.45%
			16:00	7	7.53%
			17:00	2	2.15%
			18:00	4	4.30%
			19:00	1	1.08%
			20:00	2	2.15%
			21:00	1	1.08%
			22:00	2	2.15%
			23:00	2	2.15%
February	Total calls in February 562	<i>% of Total</i>	<i>Hour</i>	<i>Calls/Hour</i>	<i>% of Calls</i>
	Calls on Sundays 127	2.44%			
			0:00	2	1.57%
			1:00	6	4.72%
			2:00	6	4.72%
			7:00	4	3.15%
			8:00	14	11.02%
			9:00	9	7.09%
			10:00	9	7.09%
			11:00	6	4.72%
			12:00	7	5.51%
			13:00	12	9.45%
			14:00	14	11.02%
			15:00	17	13.39%
			16:00	12	9.45%
			17:00	3	2.36%
			18:00	2	1.57%
			19:00	1	0.79%
			20:00	1	0.79%
			22:00	1	0.79%
			23:00	1	0.79%
	Calls on Mondays 70	1.35%			
			0:00	3	4.29%
			1:00	4	5.71%
			7:00	7	10.00%
			8:00	7	10.00%
			10:00	4	5.71%
			11:00	1	1.43%
			12:00	9	12.86%
			13:00	2	2.86%

Call Volume Analysis Report

From: 01/01/2020 0:55

To: 12/31/2020 23:22

February	Total calls in February 562	<i>% of Total</i>	<i>Hour</i>	<i>Calls/Hour</i>	<i>% of Calls</i>
			14:00	5	7.14%
			15:00	6	8.57%
			16:00	5	7.14%
			17:00	1	1.43%
			18:00	3	4.29%
			19:00	8	11.43%
			20:00	2	2.86%
			21:00	2	2.86%
			23:00	1	1.43%
Calls on Tuesdays 57			1.10%		
			0:00	2	3.51%
			1:00	3	5.26%
			2:00	2	3.51%
			5:00	2	3.51%
			6:00	1	1.75%
			7:00	5	8.77%
			8:00	3	5.26%
			9:00	4	7.02%
			10:00	2	3.51%
			12:00	2	3.51%
			13:00	8	14.04%
			14:00	5	8.77%
			15:00	4	7.02%
			16:00	6	10.53%
			17:00	2	3.51%
			18:00	2	3.51%
			19:00	1	1.75%
			20:00	1	1.75%
			23:00	2	3.51%
Calls on Wednesdays 68			1.31%		
			0:00	4	5.88%
			1:00	2	2.94%
			2:00	2	2.94%
			3:00	2	2.94%
			4:00	1	1.47%
			7:00	6	8.82%
			8:00	3	4.41%
			9:00	2	2.94%
			10:00	9	13.24%
			11:00	4	5.88%

Call Volume Analysis Report

From: 01/01/2020 0:55

To: 12/31/2020 23:22

February	Total calls in February 562	<i>% of Total</i>	<i>Hour</i>	<i>Calls/Hour</i>	<i>% of Calls</i>
			12:00	3	4.41%
			13:00	1	1.47%
			14:00	8	11.76%
			15:00	4	5.88%
			16:00	2	2.94%
			18:00	2	2.94%
			19:00	4	5.88%
			20:00	5	7.35%
			21:00	2	2.94%
			23:00	2	2.94%
Calls on Thursdays 57					1.10%
			0:00	2	3.51%
			1:00	1	1.75%
			2:00	1	1.75%
			5:00	2	3.51%
			6:00	1	1.75%
			7:00	2	3.51%
			8:00	4	7.02%
			9:00	5	8.77%
			10:00	2	3.51%
			11:00	2	3.51%
			12:00	5	8.77%
			13:00	5	8.77%
			14:00	4	7.02%
			15:00	4	7.02%
			16:00	8	14.04%
			17:00	1	1.75%
			20:00	2	3.51%
			22:00	3	5.26%
			23:00	3	5.26%
Calls on Fridays 73					1.40%
			0:00	3	4.11%
			1:00	1	1.37%
			2:00	1	1.37%
			3:00	3	4.11%
			4:00	1	1.37%
			6:00	1	1.37%
			7:00	3	4.11%
			8:00	3	4.11%
			9:00	1	1.37%

Call Volume Analysis Report

From: 01/01/2020 0:55

To: 12/31/2020 23:22

February	Total calls in February 562	<i>% of Total</i>	<i>Hour</i>	<i>Calls/Hour</i>	<i>% of Calls</i>
			10:00	2	2.74%
			11:00	7	9.59%
			12:00	2	2.74%
			13:00	8	10.96%
			14:00	3	4.11%
			15:00	4	5.48%
			16:00	4	5.48%
			17:00	4	5.48%
			18:00	5	6.85%
			19:00	5	6.85%
			20:00	6	8.22%
			21:00	2	2.74%
			22:00	1	1.37%
			23:00	3	4.11%
<hr/>					
	Calls on Saturdays 110	2.11%			
			0:00	7	6.36%
			1:00	6	5.45%
			2:00	2	1.82%
			3:00	1	0.91%
			4:00	2	1.82%
			5:00	1	0.91%
			6:00	3	2.73%
			7:00	3	2.73%
			8:00	5	4.55%
			9:00	4	3.64%
			10:00	10	9.09%
			11:00	7	6.36%
			12:00	3	2.73%
			13:00	7	6.36%
			14:00	4	3.64%
			15:00	4	3.64%
			16:00	10	9.09%
			17:00	6	5.45%
			18:00	2	1.82%
			19:00	6	5.45%
			20:00	2	1.82%
			21:00	5	4.55%
			22:00	5	4.55%
			23:00	5	4.55%
<hr/>					
March	Total calls in March 330	<i>% of Total</i>	<i>Hour</i>	<i>Calls/Hour</i>	<i>% of Calls</i>

Call Volume Analysis Report

From: 01/01/2020 0:55

To: 12/31/2020 23:22

March	Total calls in March	330	% of Total	Hour	Calls/Hour	% of Calls
Calls on Sundays		57	1.10%			
				0:00	2	3.51%
				1:00	2	3.51%
				2:00	2	3.51%
				3:00	3	5.26%
				4:00	2	3.51%
				7:00	3	5.26%
				8:00	1	1.75%
				9:00	3	5.26%
				10:00	4	7.02%
				11:00	1	1.75%
				12:00	5	8.77%
				13:00	5	8.77%
				14:00	2	3.51%
				15:00	3	5.26%
				16:00	4	7.02%
				17:00	3	5.26%
				18:00	1	1.75%
				19:00	1	1.75%
				20:00	2	3.51%
				21:00	2	3.51%
				23:00	6	10.53%
Calls on Mondays		53	1.02%			
				0:00	4	7.55%
				1:00	2	3.77%
				2:00	4	7.55%
				3:00	1	1.89%
				4:00	2	3.77%
				6:00	1	1.89%
				7:00	2	3.77%
				8:00	2	3.77%
				9:00	3	5.66%
				10:00	2	3.77%
				11:00	1	1.89%
				12:00	3	5.66%
				13:00	5	9.43%
				14:00	3	5.66%
				15:00	4	7.55%
				16:00	1	1.89%
				17:00	2	3.77%
				18:00	1	1.89%

Call Volume Analysis Report

From: 01/01/2020 0:55

To: 12/31/2020 23:22

March	Total calls in March	330	% of Total	Hour	Calls/Hour	% of Calls
				19:00	5	9.43%
				20:00	3	5.66%
				21:00	2	3.77%
Calls on Tuesdays 52						1.00%
				0:00	1	1.92%
				2:00	1	1.92%
				3:00	2	3.85%
				7:00	3	5.77%
				9:00	5	9.62%
				10:00	3	5.77%
				11:00	3	5.77%
				12:00	3	5.77%
				13:00	5	9.62%
				14:00	3	5.77%
				15:00	6	11.54%
				16:00	8	15.38%
				17:00	2	3.85%
				18:00	1	1.92%
				19:00	1	1.92%
				20:00	3	5.77%
				21:00	1	1.92%
				23:00	1	1.92%
Calls on Wednesdays 41						0.79%
				0:00	1	2.44%
				1:00	1	2.44%
				4:00	2	4.88%
				7:00	2	4.88%
				9:00	2	4.88%
				10:00	2	4.88%
				11:00	4	9.76%
				12:00	3	7.32%
				13:00	5	12.20%
				14:00	5	12.20%
				15:00	2	4.88%
				16:00	2	4.88%
				17:00	1	2.44%
				18:00	2	4.88%
				19:00	1	2.44%
				20:00	2	4.88%
				21:00	1	2.44%

Call Volume Analysis Report

From: 01/01/2020 0:55

To: 12/31/2020 23:22

March	Total calls in March	330	% of Total	Hour	Calls/Hour	% of Calls
				22:00	2	4.88%
				23:00	1	2.44%
Calls on Thursdays		42	0.81%			
				0:00	1	2.38%
				1:00	1	2.38%
				4:00	1	2.38%
				6:00	1	2.38%
				7:00	3	7.14%
				8:00	2	4.76%
				9:00	2	4.76%
				11:00	3	7.14%
				12:00	3	7.14%
				13:00	5	11.90%
				14:00	3	7.14%
				15:00	2	4.76%
				16:00	1	2.38%
				17:00	3	7.14%
				18:00	1	2.38%
				19:00	3	7.14%
				20:00	1	2.38%
				21:00	1	2.38%
				22:00	3	7.14%
				23:00	2	4.76%
Calls on Fridays		34	0.65%			
				1:00	1	2.94%
				5:00	1	2.94%
				7:00	1	2.94%
				9:00	2	5.88%
				10:00	2	5.88%
				11:00	1	2.94%
				13:00	1	2.94%
				16:00	6	17.65%
				17:00	1	2.94%
				18:00	1	2.94%
				19:00	3	8.82%
				20:00	5	14.71%
				21:00	5	14.71%
				22:00	1	2.94%
				23:00	3	8.82%
Calls on Saturdays		51	0.98%			

Call Volume Analysis Report

From: 01/01/2020 0:55

To: 12/31/2020 23:22

March	Total calls in March	330	% of Total	Hour	Calls/Hour	% of Calls
				0:00	3	5.88%
				1:00	3	5.88%
				2:00	2	3.92%
				3:00	2	3.92%
				8:00	1	1.96%
				9:00	1	1.96%
				10:00	3	5.88%
				11:00	2	3.92%
				12:00	3	5.88%
				13:00	1	1.96%
				14:00	2	3.92%
				15:00	5	9.80%
				16:00	3	5.88%
				18:00	5	9.80%
				19:00	2	3.92%
				20:00	3	5.88%
				21:00	4	7.84%
				22:00	3	5.88%
				23:00	3	5.88%
April	Total calls in April	219	% of Total	Hour	Calls/Hour	% of Calls
	Calls on Sundays	30	0.58%			
				0:00	3	10.00%
				1:00	1	3.33%
				5:00	1	3.33%
				7:00	2	6.67%
				8:00	1	3.33%
				9:00	2	6.67%
				10:00	1	3.33%
				11:00	3	10.00%
				12:00	4	13.33%
				13:00	2	6.67%
				14:00	3	10.00%
				15:00	1	3.33%
				16:00	2	6.67%
				18:00	1	3.33%
				19:00	1	3.33%
				21:00	1	3.33%
				22:00	1	3.33%
	Calls on Mondays	25	0.48%			
				2:00	1	4.00%

Call Volume Analysis Report

From: 01/01/2020 0:55

To: 12/31/2020 23:22

April	Total calls in April 219	% of Total	Hour	Calls/Hour	% of Calls
			3:00	2	8.00%
			6:00	1	4.00%
			7:00	2	8.00%
			8:00	2	8.00%
			9:00	5	20.00%
			10:00	4	16.00%
			11:00	1	4.00%
			14:00	3	12.00%
			15:00	1	4.00%
			16:00	1	4.00%
			17:00	1	4.00%
			23:00	1	4.00%
Calls on Tuesdays 25			0.48%		
			0:00	2	8.00%
			1:00	1	4.00%
			4:00	1	4.00%
			7:00	2	8.00%
			8:00	2	8.00%
			9:00	1	4.00%
			10:00	1	4.00%
			11:00	3	12.00%
			12:00	1	4.00%
			13:00	3	12.00%
			14:00	1	4.00%
			15:00	1	4.00%
			18:00	1	4.00%
			19:00	5	20.00%
Calls on Wednesdays 44			0.85%		
			0:00	1	2.27%
			1:00	3	6.82%
			5:00	1	2.27%
			6:00	1	2.27%
			8:00	3	6.82%
			9:00	1	2.27%
			10:00	2	4.55%
			11:00	7	15.91%
			12:00	2	4.55%
			13:00	4	9.09%
			14:00	3	6.82%
			15:00	2	4.55%

Call Volume Analysis Report

From: 01/01/2020 0:55

To: 12/31/2020 23:22

April	Total calls in April 219	<i>% of Total</i>	<i>Hour</i>	<i>Calls/Hour</i>	<i>% of Calls</i>
			16:00	3	6.82%
			17:00	2	4.55%
			18:00	2	4.55%
			19:00	3	6.82%
			20:00	2	4.55%
			22:00	1	2.27%
			23:00	1	2.27%
Calls on Thursdays 26					0.50%
			0:00	1	3.85%
			1:00	1	3.85%
			2:00	1	3.85%
			3:00	1	3.85%
			8:00	3	11.54%
			9:00	1	3.85%
			10:00	1	3.85%
			12:00	1	3.85%
			13:00	3	11.54%
			14:00	2	7.69%
			15:00	4	15.38%
			17:00	1	3.85%
			18:00	2	7.69%
			19:00	1	3.85%
			21:00	2	7.69%
			22:00	1	3.85%
Calls on Fridays 31					0.60%
			0:00	1	3.23%
			2:00	2	6.45%
			5:00	1	3.23%
			6:00	1	3.23%
			7:00	2	6.45%
			8:00	1	3.23%
			9:00	1	3.23%
			10:00	1	3.23%
			11:00	2	6.45%
			12:00	5	16.13%
			13:00	3	9.68%
			14:00	4	12.90%
			15:00	1	3.23%
			16:00	1	3.23%
			19:00	2	6.45%

Call Volume Analysis Report

From: 01/01/2020 0:55

To: 12/31/2020 23:22

April	Total calls in April	219	% of Total	Hour	Calls/Hour	% of Calls
				21:00	1	3.23%
				22:00	2	6.45%
Calls on Saturdays		38	0.73%			
				3:00	1	2.63%
				4:00	1	2.63%
				8:00	4	10.53%
				10:00	8	21.05%
				11:00	4	10.53%
				13:00	4	10.53%
				15:00	3	7.89%
				16:00	2	5.26%
				18:00	5	13.16%
				19:00	4	10.53%
				21:00	2	5.26%
May	Total calls in May	338	% of Total	Hour	Calls/Hour	% of Calls
Calls on Sundays		48	0.92%			
				1:00	1	2.08%
				2:00	2	4.17%
				3:00	1	2.08%
				4:00	1	2.08%
				8:00	3	6.25%
				9:00	6	12.50%
				10:00	4	8.33%
				11:00	3	6.25%
				12:00	1	2.08%
				13:00	3	6.25%
				14:00	5	10.42%
				15:00	3	6.25%
				16:00	1	2.08%
				17:00	5	10.42%
				18:00	4	8.33%
				19:00	2	4.17%
				20:00	1	2.08%
				22:00	1	2.08%
				23:00	1	2.08%
Calls on Mondays		28	0.54%			
				1:00	1	3.57%
				3:00	1	3.57%
				7:00	2	7.14%
				8:00	1	3.57%

Call Volume Analysis Report

From: 01/01/2020 0:55

To: 12/31/2020 23:22

May	Total calls in May 338	% of Total	Hour	Calls/Hour	% of Calls
			9:00	3	10.71%
			11:00	1	3.57%
			12:00	1	3.57%
			13:00	1	3.57%
			14:00	2	7.14%
			15:00	3	10.71%
			16:00	2	7.14%
			17:00	3	10.71%
			19:00	3	10.71%
			20:00	2	7.14%
			21:00	1	3.57%
			23:00	1	3.57%
Calls on Tuesdays 45					0.86%
			1:00	1	2.22%
			2:00	2	4.44%
			4:00	2	4.44%
			5:00	1	2.22%
			7:00	1	2.22%
			8:00	4	8.89%
			9:00	1	2.22%
			10:00	2	4.44%
			11:00	1	2.22%
			12:00	4	8.89%
			13:00	2	4.44%
			14:00	5	11.11%
			15:00	1	2.22%
			16:00	1	2.22%
			17:00	1	2.22%
			18:00	1	2.22%
			19:00	5	11.11%
			20:00	3	6.67%
			21:00	3	6.67%
			22:00	1	2.22%
			23:00	3	6.67%
Calls on Wednesdays 38					0.73%
			0:00	1	2.63%
			1:00	1	2.63%
			4:00	2	5.26%
			6:00	1	2.63%
			7:00	1	2.63%

Call Volume Analysis Report

From: 01/01/2020 0:55

To: 12/31/2020 23:22

May	Total calls in May	338	% of Total	Hour	Calls/Hour	% of Calls
				8:00	1	2.63%
				9:00	4	10.53%
				10:00	1	2.63%
				11:00	1	2.63%
				12:00	2	5.26%
				13:00	3	7.89%
				14:00	3	7.89%
				15:00	3	7.89%
				16:00	2	5.26%
				17:00	2	5.26%
				18:00	3	7.89%
				19:00	4	10.53%
				20:00	1	2.63%
				21:00	2	5.26%
Calls on Thursdays 48						
			0.92%	1:00	1	2.08%
				3:00	2	4.17%
				4:00	1	2.08%
				7:00	1	2.08%
				8:00	3	6.25%
				9:00	1	2.08%
				10:00	4	8.33%
				11:00	2	4.17%
				12:00	1	2.08%
				13:00	5	10.42%
				14:00	3	6.25%
				15:00	4	8.33%
				16:00	6	12.50%
				17:00	1	2.08%
				18:00	1	2.08%
				19:00	5	10.42%
				20:00	2	4.17%
				21:00	1	2.08%
				22:00	1	2.08%
				23:00	3	6.25%
Calls on Fridays 61						
			1.17%	0:00	2	3.28%
				1:00	1	1.64%
				2:00	1	1.64%
				3:00	1	1.64%

Call Volume Analysis Report

From: 01/01/2020 0:55

To: 12/31/2020 23:22

May	Total calls in May 338	<i>% of Total</i>	<i>Hour</i>	<i>Calls/Hour</i>	<i>% of Calls</i>
			4:00	1	1.64%
			8:00	7	11.48%
			9:00	6	9.84%
			10:00	2	3.28%
			11:00	2	3.28%
			12:00	5	8.20%
			13:00	3	4.92%
			14:00	5	8.20%
			15:00	2	3.28%
			16:00	8	13.11%
			17:00	2	3.28%
			18:00	3	4.92%
			19:00	3	4.92%
			20:00	2	3.28%
			21:00	2	3.28%
			22:00	1	1.64%
			23:00	2	3.28%
Calls on Saturdays 70					1.35%
			0:00	2	2.86%
			1:00	2	2.86%
			2:00	1	1.43%
			3:00	1	1.43%
			7:00	1	1.43%
			8:00	5	7.14%
			9:00	3	4.29%
			10:00	4	5.71%
			11:00	5	7.14%
			12:00	3	4.29%
			13:00	6	8.57%
			14:00	3	4.29%
			15:00	4	5.71%
			16:00	3	4.29%
			17:00	4	5.71%
			18:00	7	10.00%
			19:00	1	1.43%
			20:00	4	5.71%
			21:00	3	4.29%
			22:00	5	7.14%
			23:00	3	4.29%
June	Total calls in June 457	<i>% of Total</i>	<i>Hour</i>	<i>Calls/Hour</i>	<i>% of Calls</i>

Call Volume Analysis Report

From: 01/01/2020 0:55

To: 12/31/2020 23:22

June	Total calls in June 457	% of Total	Hour	Calls/Hour	% of Calls
Calls on Sundays 56		1.08%			
			0:00	6	10.71%
			1:00	1	1.79%
			3:00	2	3.57%
			6:00	2	3.57%
			7:00	3	5.36%
			8:00	5	8.93%
			9:00	1	1.79%
			10:00	4	7.14%
			11:00	4	7.14%
			12:00	1	1.79%
			13:00	5	8.93%
			14:00	4	7.14%
			15:00	3	5.36%
			16:00	2	3.57%
			17:00	1	1.79%
			18:00	2	3.57%
			19:00	4	7.14%
			20:00	1	1.79%
			21:00	1	1.79%
			22:00	1	1.79%
			23:00	3	5.36%
Calls on Mondays 66		1.27%			
			0:00	2	3.03%
			1:00	1	1.52%
			2:00	1	1.52%
			5:00	1	1.52%
			6:00	2	3.03%
			7:00	2	3.03%
			8:00	7	10.61%
			9:00	4	6.06%
			10:00	7	10.61%
			11:00	1	1.52%
			12:00	8	12.12%
			13:00	4	6.06%
			14:00	2	3.03%
			15:00	2	3.03%
			16:00	3	4.55%
			17:00	2	3.03%
			18:00	1	1.52%
			19:00	7	10.61%

Call Volume Analysis Report

From: 01/01/2020 0:55

To: 12/31/2020 23:22

June	Total calls in June	457	% of Total	Hour	Calls/Hour	% of Calls
				20:00	3	4.55%
				21:00	3	4.55%
				22:00	1	1.52%
				23:00	2	3.03%
Calls on Tuesdays 73						1.40%
				0:00	1	1.37%
				2:00	1	1.37%
				3:00	1	1.37%
				6:00	1	1.37%
				7:00	7	9.59%
				8:00	3	4.11%
				9:00	2	2.74%
				10:00	7	9.59%
				11:00	7	9.59%
				12:00	1	1.37%
				13:00	8	10.96%
				14:00	7	9.59%
				15:00	4	5.48%
				16:00	5	6.85%
				17:00	3	4.11%
				18:00	3	4.11%
				19:00	3	4.11%
				20:00	2	2.74%
				21:00	1	1.37%
				22:00	2	2.74%
				23:00	4	5.48%
Calls on Wednesdays 50						0.96%
				1:00	1	2.00%
				4:00	2	4.00%
				8:00	1	2.00%
				9:00	2	4.00%
				10:00	3	6.00%
				11:00	3	6.00%
				12:00	3	6.00%
				13:00	2	4.00%
				15:00	6	12.00%
				16:00	9	18.00%
				17:00	3	6.00%
				18:00	4	8.00%
				19:00	2	4.00%

Call Volume Analysis Report

From: 01/01/2020 0:55

To: 12/31/2020 23:22

June	Total calls in June 457	<i>% of Total</i>	<i>Hour</i>	<i>Calls/Hour</i>	<i>% of Calls</i>
			20:00	2	4.00%
			21:00	4	8.00%
			22:00	2	4.00%
			23:00	1	2.00%
Calls on Thursdays 50			0.96%		
			0:00	2	4.00%
			3:00	2	4.00%
			4:00	1	2.00%
			7:00	2	4.00%
			8:00	3	6.00%
			9:00	3	6.00%
			10:00	3	6.00%
			11:00	2	4.00%
			13:00	3	6.00%
			14:00	5	10.00%
			15:00	5	10.00%
			16:00	2	4.00%
			18:00	5	10.00%
			19:00	2	4.00%
			20:00	2	4.00%
			21:00	2	4.00%
			22:00	3	6.00%
			23:00	3	6.00%
Calls on Fridays 78			1.50%		
			0:00	3	3.85%
			1:00	1	1.28%
			2:00	2	2.56%
			4:00	1	1.28%
			6:00	2	2.56%
			7:00	2	2.56%
			8:00	2	2.56%
			9:00	3	3.85%
			10:00	3	3.85%
			11:00	2	2.56%
			12:00	6	7.69%
			13:00	2	2.56%
			14:00	5	6.41%
			15:00	7	8.97%
			16:00	8	10.26%
			17:00	7	8.97%

Call Volume Analysis Report

From: 01/01/2020 0:55

To: 12/31/2020 23:22

June	Total calls in June	457	% of Total	Hour	Calls/Hour	% of Calls
				19:00	9	11.54%
				20:00	2	2.56%
				21:00	4	5.13%
				22:00	3	3.85%
				23:00	4	5.13%
Calls on Saturdays 84						1.61%
				0:00	6	7.14%
				1:00	2	2.38%
				2:00	2	2.38%
				4:00	1	1.19%
				6:00	2	2.38%
				7:00	2	2.38%
				8:00	4	4.76%
				9:00	10	11.90%
				10:00	7	8.33%
				11:00	3	3.57%
				12:00	3	3.57%
				13:00	1	1.19%
				14:00	6	7.14%
				15:00	6	7.14%
				16:00	3	3.57%
				18:00	8	9.52%
				19:00	8	9.52%
				20:00	1	1.19%
				21:00	2	2.38%
				22:00	3	3.57%
				23:00	4	4.76%
July	Total calls in July	553	% of Total	Hour	Calls/Hour	% of Calls
Calls on Sundays 77						1.48%
				0:00	3	3.90%
				1:00	1	1.30%
				2:00	2	2.60%
				3:00	1	1.30%
				4:00	1	1.30%
				5:00	1	1.30%
				6:00	1	1.30%
				7:00	2	2.60%
				8:00	9	11.69%
				9:00	3	3.90%
				10:00	2	2.60%

Call Volume Analysis Report

From: 01/01/2020 0:55

To: 12/31/2020 23:22

July	Total calls in July	553	% of Total	Hour	Calls/Hour	% of Calls
				11:00	4	5.19%
				12:00	3	3.90%
				13:00	3	3.90%
				14:00	2	2.60%
				15:00	6	7.79%
				16:00	6	7.79%
				17:00	2	2.60%
				18:00	12	15.58%
				19:00	6	7.79%
				20:00	4	5.19%
				21:00	2	2.60%
				23:00	1	1.30%
Calls on Mondays 60				1.15%		
				1:00	1	1.67%
				2:00	1	1.67%
				3:00	2	3.33%
				6:00	1	1.67%
				7:00	4	6.67%
				8:00	5	8.33%
				10:00	4	6.67%
				11:00	4	6.67%
				12:00	3	5.00%
				13:00	6	10.00%
				14:00	2	3.33%
				15:00	2	3.33%
				16:00	3	5.00%
				17:00	4	6.67%
				19:00	8	13.33%
				20:00	3	5.00%
				21:00	2	3.33%
				22:00	3	5.00%
				23:00	2	3.33%
Calls on Tuesdays 61				1.17%		
				0:00	1	1.64%
				1:00	1	1.64%
				2:00	1	1.64%
				3:00	2	3.28%
				6:00	1	1.64%
				7:00	8	13.11%
				8:00	1	1.64%

Call Volume Analysis Report

From: 01/01/2020 0:55

To: 12/31/2020 23:22

July	Total calls in July 553	% of Total	Hour	Calls/Hour	% of Calls
			9:00	1	1.64%
			10:00	5	8.20%
			11:00	5	8.20%
			12:00	2	3.28%
			13:00	3	4.92%
			14:00	1	1.64%
			15:00	2	3.28%
			16:00	4	6.56%
			17:00	2	3.28%
			18:00	5	8.20%
			19:00	5	8.20%
			20:00	3	4.92%
			21:00	2	3.28%
			23:00	6	9.84%
Calls on Wednesdays 91					1.75%
			0:00	2	2.20%
			1:00	1	1.10%
			3:00	1	1.10%
			6:00	2	2.20%
			7:00	6	6.59%
			8:00	3	3.30%
			9:00	4	4.40%
			10:00	3	3.30%
			11:00	3	3.30%
			12:00	8	8.79%
			13:00	6	6.59%
			14:00	7	7.69%
			15:00	5	5.49%
			16:00	4	4.40%
			17:00	5	5.49%
			18:00	8	8.79%
			19:00	9	9.89%
			20:00	7	7.69%
			21:00	1	1.10%
			22:00	1	1.10%
			23:00	5	5.49%
Calls on Thursdays 89					1.71%
			0:00	1	1.12%
			1:00	2	2.25%
			3:00	1	1.12%

Call Volume Analysis Report

From: 01/01/2020 0:55

To: 12/31/2020 23:22

July	Total calls in July 553	% of Total	Hour	Calls/Hour	% of Calls
			6:00	1	1.12%
			8:00	6	6.74%
			9:00	2	2.25%
			10:00	2	2.25%
			11:00	6	6.74%
			12:00	7	7.87%
			13:00	10	11.24%
			14:00	5	5.62%
			15:00	6	6.74%
			16:00	6	6.74%
			17:00	2	2.25%
			18:00	16	17.98%
			19:00	3	3.37%
			20:00	5	5.62%
			21:00	4	4.49%
			22:00	3	3.37%
			23:00	1	1.12%
Calls on Fridays 89					1.71%
			0:00	1	1.12%
			2:00	1	1.12%
			3:00	1	1.12%
			5:00	2	2.25%
			7:00	5	5.62%
			8:00	3	3.37%
			9:00	1	1.12%
			10:00	7	7.87%
			11:00	6	6.74%
			12:00	1	1.12%
			13:00	6	6.74%
			14:00	4	4.49%
			15:00	8	8.99%
			16:00	7	7.87%
			17:00	5	5.62%
			18:00	10	11.24%
			19:00	5	5.62%
			20:00	7	7.87%
			21:00	4	4.49%
			22:00	4	4.49%
			23:00	1	1.12%
Calls on Saturdays 86					1.65%

Call Volume Analysis Report

From: 01/01/2020 0:55

To: 12/31/2020 23:22

July	Total calls in July 553	<i>% of Total</i>	<i>Hour</i>	<i>Calls/Hour</i>	<i>% of Calls</i>
			0:00	2	2.33%
			1:00	3	3.49%
			2:00	1	1.16%
			4:00	1	1.16%
			5:00	1	1.16%
			6:00	3	3.49%
			7:00	1	1.16%
			8:00	2	2.33%
			9:00	2	2.33%
			10:00	1	1.16%
			11:00	4	4.65%
			12:00	3	3.49%
			13:00	6	6.98%
			14:00	4	4.65%
			15:00	5	5.81%
			16:00	7	8.14%
			17:00	5	5.81%
			18:00	5	5.81%
			19:00	10	11.63%
			20:00	4	4.65%
			21:00	4	4.65%
			22:00	6	6.98%
			23:00	6	6.98%

August	Total calls in August 492	<i>% of Total</i>	<i>Hour</i>	<i>Calls/Hour</i>	<i>% of Calls</i>
	Calls on Sundays 73	1.40%			
			0:00	4	5.48%
			1:00	5	6.85%
			2:00	1	1.37%
			3:00	1	1.37%
			6:00	2	2.74%
			7:00	3	4.11%
			8:00	5	6.85%
			9:00	3	4.11%
			10:00	7	9.59%
			11:00	7	9.59%
			12:00	4	5.48%
			13:00	3	4.11%
			14:00	3	4.11%
			15:00	7	9.59%
			16:00	2	2.74%
			17:00	2	2.74%

Call Volume Analysis Report

From: 01/01/2020 0:55

To: 12/31/2020 23:22

August	Total calls in August	492	% of Total	Hour	Calls/Hour	% of Calls
				19:00	7	9.59%
				20:00	2	2.74%
				21:00	2	2.74%
				22:00	2	2.74%
				23:00	1	1.37%
<hr/>						
	Calls on Mondays	74	1.42%			
				0:00	3	4.05%
				6:00	1	1.35%
				7:00	3	4.05%
				8:00	1	1.35%
				9:00	7	9.46%
				10:00	8	10.81%
				11:00	4	5.41%
				12:00	4	5.41%
				13:00	5	6.76%
				14:00	6	8.11%
				15:00	4	5.41%
				16:00	5	6.76%
				17:00	5	6.76%
				18:00	4	5.41%
				19:00	2	2.70%
				20:00	3	4.05%
				21:00	3	4.05%
				22:00	3	4.05%
				23:00	3	4.05%
<hr/>						
	Calls on Tuesdays	51	0.98%			
				0:00	3	5.88%
				1:00	1	1.96%
				2:00	1	1.96%
				6:00	1	1.96%
				7:00	2	3.92%
				8:00	2	3.92%
				9:00	3	5.88%
				10:00	6	11.76%
				11:00	2	3.92%
				12:00	7	13.73%
				13:00	2	3.92%
				15:00	4	7.84%
				16:00	5	9.80%
				18:00	2	3.92%

Call Volume Analysis Report

From: 01/01/2020 0:55

To: 12/31/2020 23:22

August	Total calls in August	492	% of Total	Hour	Calls/Hour	% of Calls
				19:00	4	7.84%
				20:00	2	3.92%
				21:00	2	3.92%
				22:00	2	3.92%
Calls on Wednesdays 63						1.21%
				1:00	3	4.76%
				6:00	2	3.17%
				7:00	2	3.17%
				8:00	3	4.76%
				9:00	1	1.59%
				10:00	4	6.35%
				11:00	10	15.87%
				12:00	3	4.76%
				13:00	6	9.52%
				14:00	3	4.76%
				15:00	2	3.17%
				16:00	8	12.70%
				17:00	3	4.76%
				18:00	1	1.59%
				19:00	6	9.52%
				20:00	2	3.17%
				21:00	2	3.17%
				23:00	2	3.17%
Calls on Thursdays 58						1.11%
				3:00	2	3.45%
				4:00	1	1.72%
				7:00	4	6.90%
				8:00	5	8.62%
				9:00	3	5.17%
				10:00	3	5.17%
				11:00	4	6.90%
				12:00	3	5.17%
				13:00	5	8.62%
				14:00	5	8.62%
				15:00	2	3.45%
				16:00	1	1.72%
				17:00	1	1.72%
				18:00	8	13.79%
				19:00	1	1.72%
				20:00	3	5.17%

Call Volume Analysis Report

From: 01/01/2020 0:55

To: 12/31/2020 23:22

August	Total calls in August	492	% of Total	Hour	Calls/Hour	% of Calls
				21:00	4	6.90%
				22:00	1	1.72%
				23:00	2	3.45%
Calls on Fridays 73						1.40%
				4:00	1	1.37%
				7:00	1	1.37%
				8:00	5	6.85%
				9:00	5	6.85%
				10:00	7	9.59%
				11:00	7	9.59%
				12:00	2	2.74%
				13:00	6	8.22%
				14:00	3	4.11%
				15:00	3	4.11%
				16:00	5	6.85%
				17:00	5	6.85%
				18:00	2	2.74%
				19:00	5	6.85%
				20:00	4	5.48%
				21:00	6	8.22%
				22:00	4	5.48%
				23:00	2	2.74%
Calls on Saturdays 100						1.92%
				0:00	5	5.00%
				1:00	2	2.00%
				2:00	4	4.00%
				7:00	4	4.00%
				8:00	9	9.00%
				9:00	6	6.00%
				10:00	4	4.00%
				11:00	6	6.00%
				12:00	5	5.00%
				13:00	6	6.00%
				14:00	5	5.00%
				15:00	5	5.00%
				16:00	5	5.00%
				17:00	7	7.00%
				18:00	7	7.00%
				19:00	3	3.00%
				20:00	4	4.00%

Call Volume Analysis Report

From: 01/01/2020 0:55

To: 12/31/2020 23:22

August	Total calls in August	492	% of Total	Hour	Calls/Hour	% of Calls
				21:00	6	6.00%
				22:00	5	5.00%
				23:00	2	2.00%
September	Total calls in September	477	% of Total	Hour	Calls/Hour	% of Calls
	Calls on Sundays	61	1.17%			
				0:00	1	1.64%
				1:00	1	1.64%
				3:00	1	1.64%
				6:00	2	3.28%
				7:00	5	8.20%
				8:00	6	9.84%
				9:00	8	13.11%
				10:00	5	8.20%
				11:00	2	3.28%
				12:00	2	3.28%
				13:00	5	8.20%
				14:00	3	4.92%
				15:00	1	1.64%
				16:00	1	1.64%
				17:00	2	3.28%
				18:00	3	4.92%
				20:00	5	8.20%
				21:00	5	8.20%
				22:00	2	3.28%
				23:00	1	1.64%
	Calls on Mondays	52	1.00%			
				0:00	1	1.92%
				1:00	1	1.92%
				2:00	1	1.92%
				3:00	1	1.92%
				4:00	1	1.92%
				5:00	1	1.92%
				7:00	4	7.69%
				8:00	4	7.69%
				9:00	2	3.85%
				10:00	1	1.92%
				11:00	2	3.85%
				12:00	6	11.54%
				13:00	6	11.54%
				14:00	3	5.77%

Call Volume Analysis Report

From: 01/01/2020 0:55

To: 12/31/2020 23:22

September	Total calls in September	477	% of Total	Hour	Calls/Hour	% of Calls
				15:00	4	7.69%
				16:00	1	1.92%
				17:00	3	5.77%
				18:00	2	3.85%
				19:00	1	1.92%
				20:00	2	3.85%
				21:00	1	1.92%
				22:00	3	5.77%
				23:00	1	1.92%
Calls on Tuesdays 80						1.54%
				0:00	3	3.75%
				4:00	1	1.25%
				5:00	1	1.25%
				6:00	1	1.25%
				7:00	6	7.50%
				8:00	4	5.00%
				9:00	6	7.50%
				10:00	6	7.50%
				11:00	5	6.25%
				12:00	7	8.75%
				13:00	4	5.00%
				14:00	5	6.25%
				15:00	3	3.75%
				16:00	4	5.00%
				17:00	5	6.25%
				18:00	7	8.75%
				19:00	5	6.25%
				20:00	2	2.50%
				21:00	2	2.50%
				22:00	1	1.25%
				23:00	2	2.50%
Calls on Wednesdays 76						1.46%
				1:00	2	2.63%
				2:00	1	1.32%
				4:00	1	1.32%
				6:00	1	1.32%
				7:00	1	1.32%
				8:00	2	2.63%
				9:00	7	9.21%
				10:00	4	5.26%

Call Volume Analysis Report

From: 01/01/2020 0:55

To: 12/31/2020 23:22

September	Total calls in September 477	<i>% of Total</i>	<i>Hour</i>	<i>Calls/Hour</i>	<i>% of Calls</i>
			11:00	4	5.26%
			12:00	8	10.53%
			13:00	8	10.53%
			14:00	5	6.58%
			15:00	2	2.63%
			16:00	6	7.89%
			17:00	3	3.95%
			18:00	5	6.58%
			19:00	6	7.89%
			20:00	5	6.58%
			21:00	1	1.32%
			22:00	3	3.95%
			23:00	1	1.32%
Calls on Thursdays 52					1.00%
			0:00	2	3.85%
			1:00	1	1.92%
			7:00	4	7.69%
			8:00	5	9.62%
			9:00	2	3.85%
			10:00	2	3.85%
			11:00	5	9.62%
			12:00	2	3.85%
			13:00	3	5.77%
			14:00	4	7.69%
			15:00	3	5.77%
			16:00	2	3.85%
			18:00	2	3.85%
			19:00	4	7.69%
			20:00	3	5.77%
			21:00	5	9.62%
			22:00	2	3.85%
			23:00	1	1.92%
Calls on Fridays 75					1.44%
			0:00	1	1.33%
			1:00	2	2.67%
			3:00	2	2.67%
			4:00	2	2.67%
			7:00	7	9.33%
			8:00	4	5.33%
			9:00	5	6.67%

Call Volume Analysis Report

From: 01/01/2020 0:55

To: 12/31/2020 23:22

September	Total calls in September	477	% of Total	Hour	Calls/Hour	% of Calls
				10:00	1	1.33%
				11:00	6	8.00%
				12:00	2	2.67%
				13:00	2	2.67%
				14:00	5	6.67%
				15:00	7	9.33%
				16:00	1	1.33%
				17:00	4	5.33%
				18:00	3	4.00%
				19:00	6	8.00%
				20:00	8	10.67%
				21:00	3	4.00%
				22:00	3	4.00%
				23:00	1	1.33%
	Calls on Saturdays	81	1.56%			
				0:00	2	2.47%
				2:00	1	1.23%
				3:00	2	2.47%
				4:00	1	1.23%
				6:00	1	1.23%
				8:00	4	4.94%
				9:00	9	11.11%
				10:00	6	7.41%
				11:00	7	8.64%
				12:00	9	11.11%
				13:00	6	7.41%
				14:00	2	2.47%
				15:00	2	2.47%
				16:00	3	3.70%
				17:00	1	1.23%
				18:00	7	8.64%
				19:00	2	2.47%
				20:00	4	4.94%
				21:00	3	3.70%
				22:00	5	6.17%
				23:00	4	4.94%
October	Total calls in October	495	% of Total	Hour	Calls/Hour	% of Calls
	Calls on Sundays	66	1.27%			
				0:00	5	7.58%
				2:00	4	6.06%

Call Volume Analysis Report

From: 01/01/2020 0:55

To: 12/31/2020 23:22

October	Total calls in October	495	% of Total	Hour	Calls/Hour	% of Calls
				3:00	2	3.03%
				4:00	1	1.52%
				5:00	2	3.03%
				6:00	1	1.52%
				7:00	1	1.52%
				8:00	1	1.52%
				9:00	3	4.55%
				10:00	7	10.61%
				11:00	2	3.03%
				12:00	6	9.09%
				13:00	2	3.03%
				14:00	8	12.12%
				15:00	5	7.58%
				16:00	2	3.03%
				17:00	2	3.03%
				18:00	6	9.09%
				19:00	2	3.03%
				20:00	1	1.52%
				21:00	2	3.03%
				23:00	1	1.52%
Calls on Mondays 51						0.98%
				0:00	2	3.92%
				1:00	1	1.96%
				2:00	1	1.96%
				3:00	1	1.96%
				7:00	3	5.88%
				8:00	2	3.92%
				9:00	3	5.88%
				10:00	4	7.84%
				12:00	2	3.92%
				13:00	5	9.80%
				14:00	2	3.92%
				15:00	6	11.76%
				16:00	7	13.73%
				17:00	3	5.88%
				18:00	2	3.92%
				19:00	3	5.88%
				21:00	3	5.88%
				23:00	1	1.96%
Calls on Tuesdays 63						1.21%

Call Volume Analysis Report

From: 01/01/2020 0:55

To: 12/31/2020 23:22

October	Total calls in October	495	% of Total	Hour	Calls/Hour	% of Calls
				2:00	2	3.17%
				3:00	2	3.17%
				4:00	1	1.59%
				6:00	1	1.59%
				7:00	7	11.11%
				8:00	5	7.94%
				10:00	2	3.17%
				11:00	8	12.70%
				12:00	4	6.35%
				13:00	6	9.52%
				14:00	1	1.59%
				15:00	2	3.17%
				16:00	4	6.35%
				17:00	1	1.59%
				18:00	5	7.94%
				19:00	6	9.52%
				20:00	3	4.76%
				21:00	2	3.17%
				23:00	1	1.59%
Calls on Wednesdays			48	0.92%		
				1:00	1	2.08%
				2:00	1	2.08%
				4:00	1	2.08%
				5:00	1	2.08%
				7:00	3	6.25%
				8:00	3	6.25%
				9:00	4	8.33%
				10:00	4	8.33%
				11:00	2	4.17%
				12:00	2	4.17%
				13:00	5	10.42%
				14:00	3	6.25%
				15:00	5	10.42%
				16:00	1	2.08%
				18:00	4	8.33%
				19:00	2	4.17%
				20:00	4	8.33%
				23:00	2	4.17%
Calls on Thursdays			83	1.59%		
				0:00	1	1.20%

Call Volume Analysis Report

From: 01/01/2020 0:55

To: 12/31/2020 23:22

October	Total calls in October 495	<i>% of Total</i>	<i>Hour</i>	<i>Calls/Hour</i>	<i>% of Calls</i>
			1:00	1	1.20%
			3:00	1	1.20%
			5:00	1	1.20%
			7:00	6	7.23%
			8:00	6	7.23%
			9:00	2	2.41%
			10:00	8	9.64%
			11:00	5	6.02%
			12:00	2	2.41%
			13:00	5	6.02%
			14:00	3	3.61%
			15:00	5	6.02%
			16:00	4	4.82%
			17:00	3	3.61%
			18:00	6	7.23%
			19:00	3	3.61%
			20:00	11	13.25%
			21:00	2	2.41%
			22:00	3	3.61%
			23:00	5	6.02%
Calls on Fridays 87					1.67%
			0:00	3	3.45%
			1:00	1	1.15%
			3:00	2	2.30%
			4:00	1	1.15%
			5:00	1	1.15%
			6:00	1	1.15%
			7:00	11	12.64%
			8:00	3	3.45%
			9:00	3	3.45%
			10:00	2	2.30%
			11:00	2	2.30%
			12:00	2	2.30%
			13:00	3	3.45%
			14:00	3	3.45%
			15:00	3	3.45%
			16:00	2	2.30%
			17:00	2	2.30%
			18:00	7	8.05%
			19:00	10	11.49%
			20:00	8	9.20%

Call Volume Analysis Report

From: 01/01/2020 0:55

To: 12/31/2020 23:22

October	Total calls in October	495	% of Total	Hour	Calls/Hour	% of Calls
				21:00	6	6.90%
				22:00	6	6.90%
				23:00	5	5.75%
Calls on Saturdays		97	1.86%			
				0:00	1	1.03%
				1:00	2	2.06%
				2:00	4	4.12%
				6:00	1	1.03%
				7:00	5	5.15%
				8:00	3	3.09%
				9:00	4	4.12%
				10:00	7	7.22%
				11:00	7	7.22%
				12:00	8	8.25%
				13:00	4	4.12%
				14:00	1	1.03%
				15:00	6	6.19%
				16:00	8	8.25%
				17:00	5	5.15%
				18:00	1	1.03%
				19:00	3	3.09%
				20:00	3	3.09%
				21:00	9	9.28%
				22:00	4	4.12%
				23:00	11	11.34%
November	Total calls in November	336	% of Total	Hour	Calls/Hour	% of Calls
Calls on Sundays		56	1.08%			
				0:00	3	5.36%
				1:00	2	3.57%
				2:00	1	1.79%
				3:00	1	1.79%
				4:00	1	1.79%
				6:00	1	1.79%
				7:00	1	1.79%
				8:00	3	5.36%
				9:00	6	10.71%
				10:00	5	8.93%
				11:00	3	5.36%
				12:00	1	1.79%
				13:00	4	7.14%

Call Volume Analysis Report

From: 01/01/2020 0:55

To: 12/31/2020 23:22

November	Total calls in November	336	% of Total	Hour	Calls/Hour	% of Calls
				15:00	3	5.36%
				16:00	6	10.71%
				17:00	4	7.14%
				18:00	2	3.57%
				19:00	2	3.57%
				20:00	3	5.36%
				21:00	2	3.57%
				23:00	2	3.57%
Calls on Mondays 50						0.96%
				0:00	1	2.00%
				2:00	1	2.00%
				4:00	1	2.00%
				5:00	3	6.00%
				6:00	1	2.00%
				7:00	7	14.00%
				8:00	4	8.00%
				9:00	7	14.00%
				10:00	2	4.00%
				11:00	3	6.00%
				12:00	1	2.00%
				14:00	1	2.00%
				15:00	3	6.00%
				16:00	3	6.00%
				17:00	2	4.00%
				18:00	1	2.00%
				19:00	5	10.00%
				21:00	1	2.00%
				22:00	1	2.00%
				23:00	2	4.00%
Calls on Tuesdays 48						0.92%
				7:00	10	20.83%
				8:00	5	10.42%
				9:00	5	10.42%
				10:00	6	12.50%
				11:00	5	10.42%
				12:00	1	2.08%
				13:00	1	2.08%
				14:00	3	6.25%
				15:00	4	8.33%
				16:00	1	2.08%

Call Volume Analysis Report

From: 01/01/2020 0:55

To: 12/31/2020 23:22

November	Total calls in November	336	% of Total	Hour	Calls/Hour	% of Calls
				18:00	4	8.33%
				21:00	1	2.08%
				22:00	1	2.08%
				23:00	1	2.08%
Calls on Wednesdays 38						0.73%
				0:00	1	2.63%
				4:00	2	5.26%
				6:00	3	7.89%
				7:00	3	7.89%
				8:00	2	5.26%
				9:00	1	2.63%
				10:00	2	5.26%
				11:00	1	2.63%
				12:00	3	7.89%
				13:00	3	7.89%
				14:00	1	2.63%
				15:00	1	2.63%
				16:00	3	7.89%
				17:00	3	7.89%
				18:00	3	7.89%
				19:00	2	5.26%
				20:00	1	2.63%
				22:00	2	5.26%
				23:00	1	2.63%
Calls on Thursdays 55						1.06%
				1:00	4	7.27%
				2:00	1	1.82%
				3:00	1	1.82%
				6:00	1	1.82%
				7:00	5	9.09%
				8:00	5	9.09%
				9:00	5	9.09%
				10:00	3	5.45%
				11:00	3	5.45%
				12:00	5	9.09%
				13:00	4	7.27%
				15:00	1	1.82%
				16:00	1	1.82%
				17:00	1	1.82%
				18:00	2	3.64%

Call Volume Analysis Report

From: 01/01/2020 0:55

To: 12/31/2020 23:22

November	Total calls in November	336	% of Total	Hour	Calls/Hour	% of Calls
				19:00	2	3.64%
				20:00	1	1.82%
				21:00	4	7.27%
				22:00	5	9.09%
				23:00	1	1.82%
Calls on Fridays 56						1.08%
				1:00	1	1.79%
				2:00	1	1.79%
				7:00	6	10.71%
				8:00	3	5.36%
				9:00	2	3.57%
				10:00	7	12.50%
				11:00	2	3.57%
				12:00	4	7.14%
				13:00	5	8.93%
				14:00	5	8.93%
				15:00	3	5.36%
				16:00	4	7.14%
				17:00	1	1.79%
				18:00	3	5.36%
				19:00	4	7.14%
				21:00	2	3.57%
				22:00	2	3.57%
				23:00	1	1.79%
Calls on Saturdays 33						0.63%
				1:00	1	3.03%
				2:00	1	3.03%
				4:00	1	3.03%
				7:00	1	3.03%
				8:00	2	6.06%
				9:00	3	9.09%
				10:00	1	3.03%
				11:00	2	6.06%
				13:00	2	6.06%
				14:00	6	18.18%
				15:00	1	3.03%
				16:00	3	9.09%
				17:00	2	6.06%
				18:00	1	3.03%
				19:00	3	9.09%

Call Volume Analysis Report

From: 01/01/2020 0:55

To: 12/31/2020 23:22

November	Total calls in November	336	% of Total	Hour	Calls/Hour	% of Calls
				21:00	1	3.03%
				22:00	1	3.03%
				23:00	1	3.03%
December	Total calls in December	276	% of Total	Hour	Calls/Hour	% of Calls
	Calls on Sundays	34	0.65%			
				0:00	2	5.88%
				3:00	2	5.88%
				6:00	1	2.94%
				9:00	4	11.76%
				10:00	1	2.94%
				11:00	3	8.82%
				12:00	5	14.71%
				13:00	3	8.82%
				14:00	5	14.71%
				16:00	2	5.88%
				18:00	2	5.88%
				19:00	2	5.88%
				21:00	1	2.94%
				23:00	1	2.94%
	Calls on Mondays	44	0.85%			
				3:00	1	2.27%
				4:00	1	2.27%
				7:00	8	18.18%
				8:00	3	6.82%
				9:00	3	6.82%
				10:00	2	4.55%
				11:00	2	4.55%
				12:00	2	4.55%
				13:00	1	2.27%
				14:00	6	13.64%
				15:00	4	9.09%
				16:00	2	4.55%
				17:00	2	4.55%
				18:00	1	2.27%
				20:00	3	6.82%
				22:00	1	2.27%
				23:00	2	4.55%
	Calls on Tuesdays	44	0.85%			
				0:00	1	2.27%
				1:00	3	6.82%

Call Volume Analysis Report

From: 01/01/2020 0:55

To: 12/31/2020 23:22

December	Total calls in December	276	% of Total	Hour	Calls/Hour	% of Calls
				2:00	1	2.27%
				4:00	2	4.55%
				5:00	1	2.27%
				7:00	3	6.82%
				8:00	2	4.55%
				9:00	2	4.55%
				10:00	4	9.09%
				11:00	2	4.55%
				12:00	4	9.09%
				13:00	7	15.91%
				14:00	4	9.09%
				15:00	2	4.55%
				16:00	2	4.55%
				17:00	1	2.27%
				20:00	1	2.27%
				22:00	1	2.27%
				23:00	1	2.27%
Calls on Wednesdays 42						0.81%
				0:00	2	4.76%
				1:00	1	2.38%
				3:00	1	2.38%
				6:00	1	2.38%
				8:00	4	9.52%
				9:00	2	4.76%
				10:00	3	7.14%
				11:00	2	4.76%
				12:00	2	4.76%
				13:00	3	7.14%
				14:00	2	4.76%
				15:00	7	16.67%
				16:00	4	9.52%
				17:00	1	2.38%
				18:00	2	4.76%
				19:00	2	4.76%
				20:00	1	2.38%
				22:00	1	2.38%
				23:00	1	2.38%
Calls on Thursdays 53						1.02%
				0:00	1	1.89%
				2:00	1	1.89%

Call Volume Analysis Report

From: 01/01/2020 0:55

To: 12/31/2020 23:22

December	Total calls in December	276	% of Total	Hour	Calls/Hour	% of Calls
				7:00	2	3.77%
				8:00	6	11.32%
				10:00	4	7.55%
				11:00	4	7.55%
				12:00	3	5.66%
				13:00	4	7.55%
				14:00	3	5.66%
				15:00	4	7.55%
				16:00	4	7.55%
				17:00	1	1.89%
				18:00	3	5.66%
				19:00	4	7.55%
				20:00	1	1.89%
				21:00	4	7.55%
				22:00	2	3.77%
				23:00	2	3.77%
<hr/>						
	Calls on Fridays	30	0.58%			
				0:00	2	6.67%
				1:00	1	3.33%
				4:00	1	3.33%
				5:00	3	10.00%
				8:00	4	13.33%
				9:00	1	3.33%
				12:00	3	10.00%
				13:00	1	3.33%
				14:00	1	3.33%
				15:00	6	20.00%
				16:00	2	6.67%
				17:00	1	3.33%
				18:00	1	3.33%
				22:00	2	6.67%
				23:00	1	3.33%
<hr/>						
	Calls on Saturdays	29	0.56%			
				5:00	1	3.45%
				6:00	1	3.45%
				7:00	1	3.45%
				8:00	1	3.45%
				9:00	3	10.34%
				10:00	4	13.79%
				11:00	2	6.90%

Call Volume Analysis Report

From: 01/01/2020 0:55

To: 12/31/2020 23:22

December	Total calls in December 276	<i>% of Total</i>	<i>Hour</i>	<i>Calls/Hour</i>	<i>% of Calls</i>
			12:00	2	6.90%
			13:00	1	3.45%
			14:00	3	10.34%
			15:00	1	3.45%
			16:00	1	3.45%
			19:00	2	6.90%
			20:00	1	3.45%
			21:00	3	10.34%
			23:00	2	6.90%
				Total:	5,204