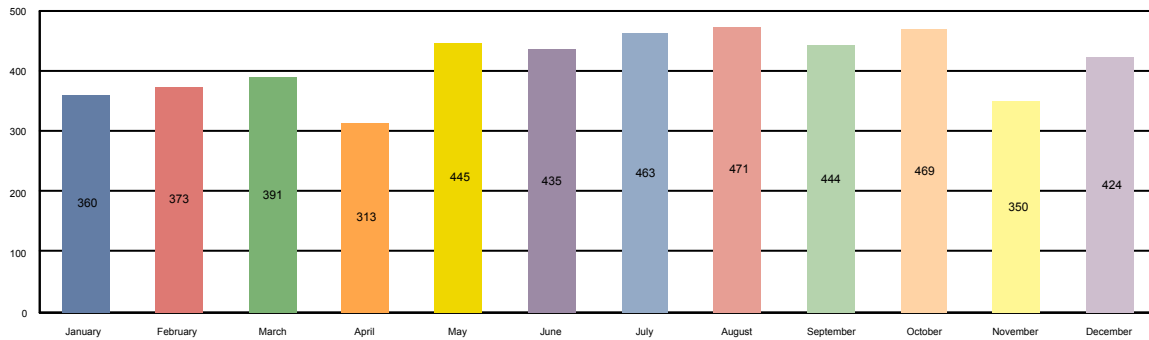
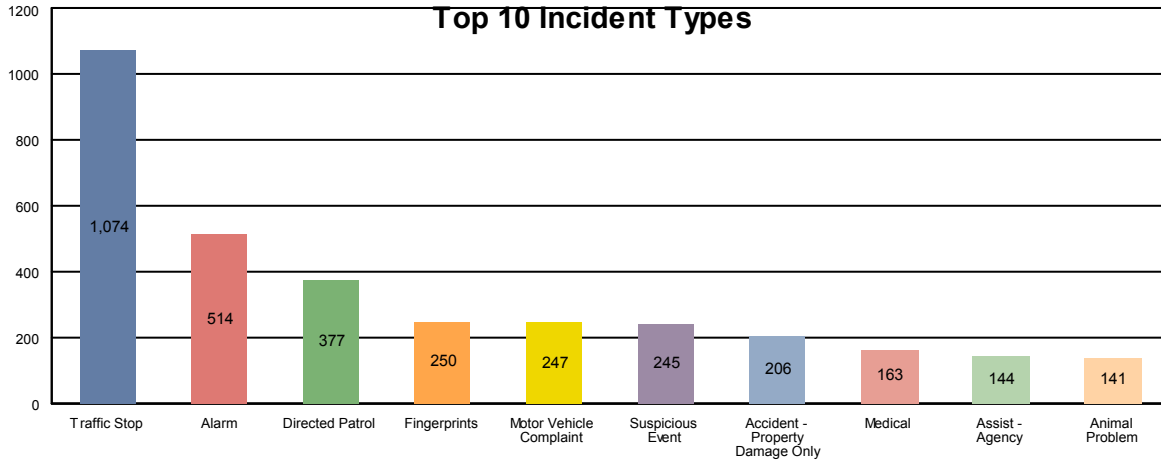


Incident Analysis Report

Rev.02/17/12



Incident Analysis Report

From: 01/01/2018 0:06

To: 12/31/2018 22:05

Stowe Police Department

ORI: VT0080200

Call Type	Count of Inc.	% of Total Inc.	Month	Count of Inc.	% of Inc. Type
911 Hangup	55	1.11%			
			January	2	3.64%
			February	3	5.45%
			March	6	10.91%
			April	4	7.27%
			May	1	1.82%
			June	3	5.45%
			July	7	12.73%
			August	6	10.91%
			September	4	7.27%
			October	1	1.82%
			November	4	7.27%
			December	14	25.45%
Abandoned Vehicle	3	0.06%			

Incident Analysis Report

From: 01/01/2018 0:06

To: 12/31/2018 22:05

Stowe Police Department

ORI: VT0080200

Call Type	Count of Inc.	% of Total Inc.	Month	Count of Inc.	% of Inc. Type
			September	2	66.67%
			December	1	33.33%
Accident - Fatality	1	0.02%			
			July	1	100.00%
Accident - Injury to Person(s)	14	0.28%			
			January	2	14.29%
			February	1	7.14%
			March	2	14.29%
			May	1	7.14%
			June	3	21.43%
			July	1	7.14%
			September	1	7.14%
			November	1	7.14%
			December	2	14.29%
Accident - LSA	58	1.17%			
			January	5	8.62%
			February	7	12.07%
			March	6	10.34%
			April	4	6.90%
			May	7	12.07%
			June	2	3.45%
			July	2	3.45%
			August	7	12.07%
			September	2	3.45%
			October	3	5.17%
			November	3	5.17%
			December	10	17.24%
Accident - Property Damage Only	206	4.17%			
			January	30	14.56%
			February	19	9.22%
			March	26	12.62%
			April	9	4.37%
			May	6	2.91%
			June	4	1.94%
			July	14	6.80%

Incident Analysis Report

From: 01/01/2018 0:06

To: 12/31/2018 22:05

Stowe Police Department

ORI: VT0080200

Call Type

	Count of Inc.	% of Total Inc.	Month	Count of Inc.	% of Inc. Type
			August	10	4.85%
			September	18	8.74%
			October	17	8.25%
			November	26	12.62%
			December	27	13.11%
Aircraft	1	0.02%			
			August	1	100.00%
Alarm	514	10.41%			
			January	52	10.12%
			February	33	6.42%
			March	39	7.59%
			April	27	5.25%
			May	52	10.12%
			June	38	7.39%
			July	48	9.34%
			August	63	12.26%
			September	30	5.84%
			October	52	10.12%
			November	46	8.95%
			December	34	6.61%
Animal Problem	141	2.86%			
			January	8	5.67%
			February	11	7.80%
			March	7	4.96%
			April	9	6.38%
			May	12	8.51%
			June	17	12.06%
			July	22	15.60%
			August	19	13.48%
			September	12	8.51%
			October	11	7.80%
			November	2	1.42%
			December	11	7.80%
Assault	9	0.18%			
			January	3	33.33%

Incident Analysis Report

From: 01/01/2018 0:06

To: 12/31/2018 22:05

Stowe Police Department

ORI: VT0080200

Call Type

Call Type	Count of Inc.	% of Total Inc.	Month	Count of Inc.	% of Inc. Type
			February	1	11.11%
			March	1	11.11%
			May	1	11.11%
			August	2	22.22%
			October	1	11.11%
Assist - Agency	144	2.92%			
			January	15	10.42%
			February	6	4.17%
			March	11	7.64%
			April	7	4.86%
			May	11	7.64%
			June	15	10.42%
			July	16	11.11%
			August	6	4.17%
			September	7	4.86%
			October	16	11.11%
			November	16	11.11%
			December	18	12.50%
Assist - Motorist	71	1.44%			
			January	10	14.08%
			February	5	7.04%
			March	11	15.49%
			April	5	7.04%
			May	1	1.41%
			June	4	5.63%
			July	3	4.23%
			August	6	8.45%
			September	6	8.45%
			October	8	11.27%
			November	4	5.63%
			December	8	11.27%
Assist - Other	8	0.16%			
			January	2	25.00%
			March	2	25.00%
			May	1	12.50%

Incident Analysis Report

From: 01/01/2018 0:06

To: 12/31/2018 22:05

Stowe Police Department

ORI: VT0080200

Call Type

Call Type	Count of Inc.	% of Total Inc.	Month	Count of Inc.	% of Inc. Type
			June	2	25.00%
			July	1	12.50%
Assist - Public	92	1.86%			
			January	6	6.52%
			February	5	5.43%
			March	8	8.70%
			April	8	8.70%
			May	11	11.96%
			June	2	2.17%
			July	10	10.87%
			August	7	7.61%
			September	12	13.04%
			October	6	6.52%
			November	9	9.78%
			December	8	8.70%
Background Investigation	4	0.08%			
			April	1	25.00%
			August	1	25.00%
			October	2	50.00%
Bad Check	1	0.02%			
			August	1	100.00%
Burglary	7	0.14%			
			January	1	14.29%
			June	1	14.29%
			July	2	28.57%
			September	1	14.29%
			October	1	14.29%
			December	1	14.29%
Citizen Dispute	69	1.40%			
			January	3	4.35%
			February	2	2.90%
			March	8	11.59%
			April	10	14.49%
			May	4	5.80%
			June	9	13.04%

Incident Analysis Report

From: 01/01/2018 0:06

To: 12/31/2018 22:05

Stowe Police Department

ORI: VT0080200

Call Type

Call Type	Count of Inc.	% of Total Inc.	Month	Count of Inc.	% of Inc. Type
			July	12	17.39%
			August	2	2.90%
			September	4	5.80%
			October	2	2.90%
			November	6	8.70%
			December	7	10.14%
CO Alarm	19	0.38%			
			January	3	15.79%
			March	2	10.53%
			April	1	5.26%
			July	1	5.26%
			August	2	10.53%
			September	1	5.26%
			October	3	15.79%
			November	3	15.79%
			December	3	15.79%
Consent Search	1	0.02%			
			July	1	100.00%
Custodial Dispute	7	0.14%			
			April	1	14.29%
			May	2	28.57%
			August	1	14.29%
			October	1	14.29%
			November	1	14.29%
			December	1	14.29%
Dead Body	5	0.10%			
			March	2	40.00%
			June	1	20.00%
			July	1	20.00%
			August	1	20.00%
Deliver Message	2	0.04%			
			August	1	50.00%
			September	1	50.00%
Directed Patrol	377	7.63%			
			January	8	2.12%

Incident Analysis Report

From: 01/01/2018 0:06

To: 12/31/2018 22:05

Stowe Police Department

ORI: VT0080200
Call Type

Call Type	Count of Inc.	% of Total Inc.	Month	Count of Inc.	% of Inc. Type
			February	11	2.92%
			March	42	11.14%
			April	37	9.81%
			May	38	10.08%
			June	45	11.94%
			July	20	5.31%
			August	37	9.81%
			September	57	15.12%
			October	30	7.96%
			November	27	7.16%
			December	25	6.63%
DLS	20	0.41%			
			February	4	20.00%
			March	1	5.00%
			May	1	5.00%
			June	2	10.00%
			July	3	15.00%
			August	4	20.00%
			October	2	10.00%
			December	3	15.00%
Drugs	1	0.02%			
			September	1	100.00%
DUI	38	0.77%			
			January	2	5.26%
			February	2	5.26%
			April	2	5.26%
			May	7	18.42%
			June	2	5.26%
			July	1	2.63%
			August	1	2.63%
			September	2	5.26%
			October	4	10.53%
			November	4	10.53%
			December	11	28.95%
Electric Problem	2	0.04%			

Incident Analysis Report

From: 01/01/2018 0:06

To: 12/31/2018 22:05

Stowe Police Department

ORI: VT0080200

Call Type	Count of Inc.	% of Total Inc.	Month	Count of Inc.	% of Inc. Type
			November	1	50.00%
			December	1	50.00%
<u>Elevator Emergency</u>	3	0.06%			
			February	1	33.33%
			April	1	33.33%
			August	1	33.33%
<u>Escort</u>	3	0.06%			
			October	1	33.33%
			November	2	66.67%
<u>Fingerprints</u>	250	5.06%			
			January	22	8.80%
			February	14	5.60%
			March	15	6.00%
			April	22	8.80%
			May	27	10.80%
			June	19	7.60%
			July	20	8.00%
			August	40	16.00%
			September	18	7.20%
			October	25	10.00%
			November	14	5.60%
			December	14	5.60%
<u>Fire</u>	31	0.63%			
			February	3	9.68%
			March	5	16.13%
			April	1	3.23%
			May	5	16.13%
			June	2	6.45%
			July	1	3.23%
			August	3	9.68%
			September	1	3.23%
			October	3	9.68%
			November	1	3.23%
			December	6	19.35%
<u>Fire Alarm</u>	95	1.92%			

Incident Analysis Report

From: 01/01/2018 0:06

To: 12/31/2018 22:05

Stowe Police Department

ORI: VT0080200

Call Type

Call Type	Count of Inc.	% of Total Inc.	Month	Count of Inc.	% of Inc. Type
			September	11	10.48%
			October	11	10.48%
			November	5	4.76%
			December	7	6.67%
Fraud	32	0.65%			
			January	4	12.50%
			February	1	3.13%
			April	2	6.25%
			May	1	3.13%
			June	4	12.50%
			July	8	25.00%
			August	2	6.25%
			September	2	6.25%
			October	2	6.25%
			December	6	18.75%
Hazardous Materials	2	0.04%			
			May	1	50.00%
			October	1	50.00%
Intoxication	21	0.43%			
			January	1	4.76%
			February	4	19.05%
			March	1	4.76%
			April	2	9.52%
			May	2	9.52%
			June	2	9.52%
			July	1	4.76%
			August	4	19.05%
			September	1	4.76%
			November	1	4.76%
			December	2	9.52%
Juvenile Problem	43	0.87%			
			February	2	4.65%
			March	1	2.33%
			May	6	13.95%
			June	3	6.98%

Incident Analysis Report

From: 01/01/2018 0:06

To: 12/31/2018 22:05

Stowe Police Department

ORI: VT0080200

Call Type

Call Type	Count of Inc.	% of Total Inc.	Month	Count of Inc.	% of Inc. Type
			July	4	9.30%
			August	5	11.63%
			September	4	9.30%
			October	3	6.98%
			November	9	20.93%
			December	6	13.95%
Littering	10	0.20%			
			January	1	10.00%
			March	1	10.00%
			April	1	10.00%
			May	2	20.00%
			June	2	20.00%
			July	1	10.00%
			August	1	10.00%
			November	1	10.00%
Lockdown Drill	2	0.04%			
			April	1	50.00%
			May	1	50.00%
Lost Property	60	1.22%			
			January	4	6.67%
			February	6	10.00%
			March	5	8.33%
			April	6	10.00%
			May	4	6.67%
			June	3	5.00%
			July	10	16.67%
			August	4	6.67%
			September	5	8.33%
			October	5	8.33%
			November	3	5.00%
			December	5	8.33%
Medical	163	3.30%			
			January	8	4.91%
			February	13	7.98%
			March	11	6.75%

Incident Analysis Report

From: 01/01/2018 0:06

To: 12/31/2018 22:05

Stowe Police Department

ORI: VT0080200

Call Type

Count of Inc. % of Total Inc.

Count of Inc. % of Inc. Type

Month	Count of Inc.	% of Inc. Type
April	13	7.98%
May	8	4.91%
June	12	7.36%
July	20	12.27%
August	17	10.43%
September	11	6.75%
October	20	12.27%
November	15	9.20%
December	15	9.20%

Missing Person **5** **0.10%**

January	1	20.00%
May	1	20.00%
June	2	40.00%
December	1	20.00%

Motor Vehicle Complaint **247** **5.00%**

January	29	11.74%
February	22	8.91%
March	12	4.86%
April	16	6.48%
May	16	6.48%
June	14	5.67%
July	23	9.31%
August	31	12.55%
September	21	8.50%
October	20	8.10%
November	14	5.67%
December	29	11.74%

Noise Disturbance **54** **1.09%**

January	2	3.70%
March	1	1.85%
April	2	3.70%
May	6	11.11%
June	7	12.96%
July	11	20.37%
August	14	25.93%

Incident Analysis Report

From: 01/01/2018 0:06

To: 12/31/2018 22:05

Stowe Police Department

ORI: VT0080200
Call Type

Call Type	Count of Inc.	% of Total Inc.	Month	Count of Inc.	% of Inc. Type
			September	8	14.81%
			October	2	3.70%
			November	1	1.85%
Odor Investigation	9	0.18%			
			January	1	11.11%
			February	1	11.11%
			March	2	22.22%
			May	1	11.11%
			July	1	11.11%
			August	1	11.11%
			December	2	22.22%
Parking Problem	74	1.50%			
			January	6	8.11%
			February	14	18.92%
			March	17	22.97%
			April	1	1.35%
			May	6	8.11%
			July	6	8.11%
			August	2	2.70%
			September	3	4.05%
			October	2	2.70%
			November	4	5.41%
			December	13	17.57%
Phone Problem	5	0.10%			
			January	2	40.00%
			August	1	20.00%
			November	1	20.00%
			December	1	20.00%
Property Damage	22	0.45%			
			January	1	4.55%
			February	1	4.55%
			March	1	4.55%
			April	2	9.09%
			May	2	9.09%
			June	5	22.73%

Incident Analysis Report

From: 01/01/2018 0:06

To: 12/31/2018 22:05

Stowe Police Department

ORI: VT0080200

Call Type

	Count of Inc.	% of Total Inc.	Month	Count of Inc.	% of Inc. Type
			August	4	18.18%
			September	2	9.09%
			October	2	9.09%
			November	1	4.55%
			December	1	4.55%
<hr/>					
Property Watch	17	0.34%			
			January	1	5.88%
			February	3	17.65%
			March	1	5.88%
			May	3	17.65%
			June	5	29.41%
			July	3	17.65%
			August	1	5.88%
<hr/>					
Public Speaking	7	0.14%			
			February	1	14.29%
			May	1	14.29%
			August	1	14.29%
			October	1	14.29%
			November	1	14.29%
			December	2	28.57%
<hr/>					
Rescue Call	3	0.06%			
			May	1	33.33%
			August	1	33.33%
			October	1	33.33%
<hr/>					
Safety Hazard	51	1.03%			
			August	3	5.88%
			September	8	15.69%
			October	27	52.94%
			November	1	1.96%
			December	12	23.53%
<hr/>					
Sex Offense	5	0.10%			
			January	1	20.00%
			April	1	20.00%
			May	1	20.00%
			August	1	20.00%

Incident Analysis Report

From: 01/01/2018 0:06

To: 12/31/2018 22:05

Stowe Police Department

ORI: VT0080200

Call Type	Count of Inc.	% of Total Inc.	Month	Count of Inc.	% of Inc. Type
			October	1	20.00%
Sexual Assault	1	0.02%			
			January	1	100.00%
Snowmobile	1	0.02%			
			February	1	100.00%
Suicide Attempt	1	0.02%			
			April	1	100.00%
Suspicious Event	245	4.96%			
			January	18	7.35%
			February	20	8.16%
			March	19	7.76%
			April	16	6.53%
			May	15	6.12%
			June	24	9.80%
			July	24	9.80%
			August	26	10.61%
			September	21	8.57%
			October	28	11.43%
			November	21	8.57%
			December	13	5.31%
Theft	53	1.07%			
			January	3	5.66%
			February	3	5.66%
			March	7	13.21%
			April	2	3.77%
			May	3	5.66%
			June	4	7.55%
			July	5	9.43%
			August	7	13.21%
			September	7	13.21%
			October	4	7.55%
			November	3	5.66%
			December	5	9.43%
Threats/ Harassment	13	0.26%			
			January	2	15.38%

Incident Analysis Report

From: 01/01/2018 0:06

To: 12/31/2018 22:05

Stowe Police Department

ORI: VT0080200
Call Type

Call Type	Count of Inc.	% of Total Inc.	Month	Count of Inc.	% of Inc. Type
			February	2	15.38%
			March	2	15.38%
			April	2	15.38%
			May	2	15.38%
			July	1	7.69%
			August	1	7.69%
			December	1	7.69%
Traffic Detail	3	0.06%			
			January	1	33.33%
			May	1	33.33%
			September	1	33.33%
Traffic Hazard	74	1.50%			
			January	10	13.51%
			February	6	8.11%
			March	2	2.70%
			April	4	5.41%
			May	9	12.16%
			June	3	4.05%
			July	3	4.05%
			August	4	5.41%
			September	6	8.11%
			October	6	8.11%
			November	16	21.62%
			December	5	6.76%
Traffic Stop	1074	21.75%			
			January	53	4.93%
			February	110	10.24%
			March	84	7.82%
			April	68	6.33%
			May	124	11.55%
			June	118	10.99%
			July	97	9.03%
			August	73	6.80%
			September	110	10.24%
			October	95	8.85%

Incident Analysis Report

From: 01/01/2018 0:06

To: 12/31/2018 22:05

Stowe Police Department

ORI: VT0080200

Call Type

	Count of Inc.	% of Total Inc.	Month	Count of Inc.	% of Inc. Type
			November	66	6.15%
			December	76	7.08%
Transport	6	0.12%			
			January	1	16.67%
			March	1	16.67%
			July	1	16.67%
			August	1	16.67%
			November	1	16.67%
			December	1	16.67%
Trespassing	8	0.16%			
			July	1	12.50%
			August	1	12.50%
			September	2	25.00%
			October	1	12.50%
			November	2	25.00%
			December	1	12.50%
TRO/FRO Service	15	0.30%			
			January	2	13.33%
			February	3	20.00%
			March	2	13.33%
			April	4	26.67%
			July	1	6.67%
			August	1	6.67%
			November	1	6.67%
			December	1	6.67%
TRO/FRO Violation	5	0.10%			
			January	2	40.00%
			February	1	20.00%
			March	1	20.00%
			June	1	20.00%
Unlawful Mischief	4	0.08%			
			September	3	75.00%
			November	1	25.00%
Unsecure Premis	14	0.28%			
			March	1	7.14%

Incident Analysis Report

From: 01/01/2018 0:06

To: 12/31/2018 22:05

Stowe Police Department

ORI: VT0080200

Call Type

Call Type	Count of Inc.	% of Total Inc.	Month	Count of Inc.	% of Inc. Type
			April	1	7.14%
			May	1	7.14%
			June	1	7.14%
			July	2	14.29%
			August	5	35.71%
			September	1	7.14%
			November	1	7.14%
			December	1	7.14%
Vandalism	10	0.20%			
			June	2	20.00%
			August	4	40.00%
			September	1	10.00%
			October	2	20.00%
			December	1	10.00%
VIN verification	57	1.15%			
			January	5	8.77%
			February	3	5.26%
			March	1	1.75%
			April	4	7.02%
			May	9	15.79%
			June	6	10.53%
			July	6	10.53%
			August	3	5.26%
			September	9	15.79%
			October	9	15.79%
			November	1	1.75%
			December	1	1.75%
Violation of Conditions of Release	2	0.04%			
			April	1	50.00%
			September	1	50.00%
Wanted Person	7	0.14%			
			January	1	14.29%
			May	2	28.57%
			July	1	14.29%
			September	1	14.29%

Incident Analysis Report

From: 01/01/2018 0:06

To: 12/31/2018 22:05

Stowe Police Department

ORI: VT0080200

Call Type

Count of Inc.	% of Total Inc.	Month	Count of Inc.	% of Inc. Type
		October	1	14.29%
		November	1	14.29%
<hr/>				
Welfare Check	40			0.81%
		January	7	17.50%
		February	7	17.50%
		March	3	7.50%
		April	1	2.50%
		May	3	7.50%
		June	2	5.00%
		July	3	7.50%
		August	4	10.00%
		September	2	5.00%
		October	3	7.50%
		November	1	2.50%
		December	4	10.00%

Total: 4938